

ADVANCE ADAPTERS INC.

P.O. Box 247, 4320 Aerotech Center Way

Paso Robles, CA 93447

Telephone: (800) 350-2223 Fax: (805) 238-4201

P/N: 50-2704A

New Item: (3/93)

PAGE 1 OF 3

Page Rev. Date: 05-03-13

AOD/AODE/4R70W 4WD TRANSMISSIONS TO BRONCO DANA 20 TRANSFER CASE 1966-76

KIT CONSISTS OF:

No.	Qty	Part No.	Description
1.	1	51-2703	ADAPTER HOUSING
2.	1	51-9920A	MODIFIED ADAPTER PLATE
3.	1	52-4303	SPUD SHAFT
4.	2	716042	CROSSMEMBERSLEEVES
5.	1	716223	RETAINER
6.	1	716302	SEALED BEARING
7.	1	716455	SNAPRING
8.	2	716513	GASKET
10.	1	716714	O-RING
11.	1	716755	SEAL
12.	6	720010	8MM X 1.25 X 40 MM SHCS (ADAPTER to TRANSMISSION)
13.	6	723103	LOCK WASHERS (ADAPTER to TRANSMISSION)
14.	6	723701	3/8"-16 NUT PLATED
15.	6	723704	3/8" LOCK WASHER PLATED
16.	6	723712	3/8"-16 x 3.5" LG.
17.	2	724302	7/16" FLAT WASHER
18.	2	724311	7/16"-14 x 3-1/2 H.H.C.S.
19.	1	FMC001	FORD INSTRUCTION MANUAL (Refer to AOD Article)

The transmission oil pan may require some clearance modifications for the front drive shaft. This is only on the truck style transmission pan

GENERAL INFORMATION:

1. The crossmember support that we have provided on the bottom of the new adapter housing is very similar to the original support bracket. It may be necessary to modify the donuts and bolts in order to assemble the existing crossmember to the new adapter housing.

This kit has been designed to retain the stock Bronco rubber T/C mounts. These mounts were previously equipped with a 1/2" bolt. Our casting has been drilled and tapped for a 7/16" bolt. We have supplied this kit with the necessary sleeves, washers, and bolts to properly secure this adapter.

SPECIAL NOTE: The components packaged in this kit have been assembled and machined for specific type of conversions. Modifications to any of the components will void any possible warranty or return privileges. If you do not fully understand modifications or changes that will be required to complete your conversion, we strongly recommend that you contact our sales department for more information. This instruction sheet is only to be used for the assembly of Advance Adapter components. We recommend that a service manual pertaining to your vehicle be obtained for specific torque values, wiring diagrams and other related equipment. These manuals are normally available at automotive dealerships and parts stores.

ADVANCE ADAPTERS INC.

P.O. Box 247, 4320 Aerotech Center Way
Paso Robles, CA 93447

Telephone: (800) 350-2223 Fax: (805) 238-4201

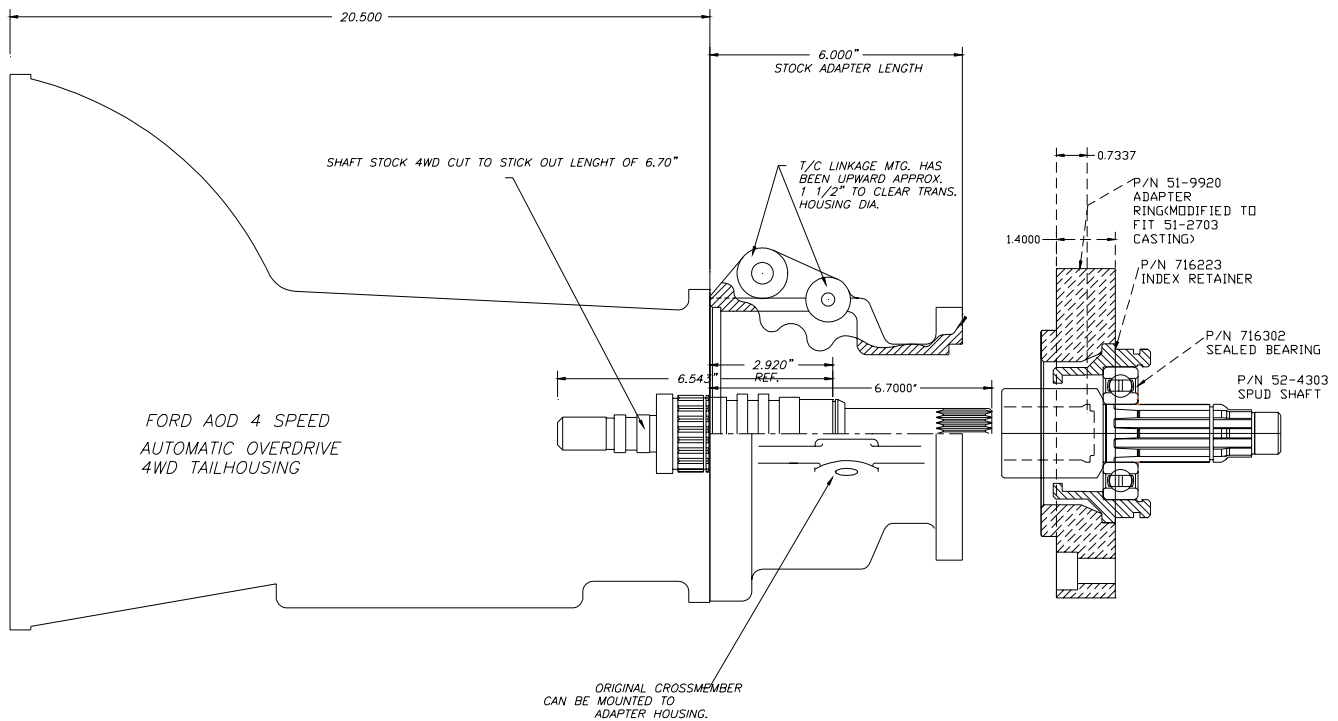
P/N: 50-2704A

New Item: (3/93)

PAGE 2 OF 3

Page Rev. Date: 02-26-07

AOD/AODE/4R70W 4WD TRANSMISSIONS TO BRONCO DANA 20 TRANSFER CASE 1966-76



SPECIAL NOTE: The components packaged in this kit have been assembled and machined for specific type of conversions. Modifications to any of the components will void any possible warranty or return privileges. If you do not fully understand modifications or changes that will be required to complete your conversion, we strongly recommend that you contact our sales department for more information. This instruction sheet is only to be used for the assembly of Advance Adapter components. We recommend that a service manual pertaining to your vehicle be obtained for specific torque values, wiring diagrams and other related equipment. These manuals are normally available at automotive dealerships and parts stores.

ADVANCE ADAPTERS INC.

P.O. Box 247, 4320 Aerotech Center Way

Paso Robles, CA 93447

Telephone: (800) 350-2223 Fax: (805) 238-4201

P/N: 50-2704A

New Item: (3/93)

PAGE 3 OF 3

Page Rev. Date: 07-26-06

AOD/AODE/4R70W 4WD TRANSMISSIONS TO BRONCO DANA 20 TRANSFER CASE 1966-76



NOTES:

In order to mount the new adapter housing into the original Bronco crossmember, you will need to modify the crossmember for additional clearance. The new adapter housing is wider and will require a slight elongation on the bushing index holes of the crossmember.

In order to provide the clearance around the bottom part of the adapter, we would suggest that you section a small portion of the crossmember as shown in the illustration. This small portion can then be relocated and rewelded as illustrated.

SPECIAL NOTE: The components packaged in this kit have been assembled and machined for specific type of conversions. Modifications to any of the components will void any possible warranty or return privileges. If you do not fully understand modifications or changes that will be required to complete your conversion, we strongly recommend that you contact our sales department for more information. This instruction sheet is only to be used for the assembly of Advance Adapter components. We recommend that a service manual pertaining to your vehicle be obtained for specific torque values, wiring diagrams and other related equipment. These manuals are normally available at automotive dealerships and parts stores.